



**FOR SALE**

**Approx 79 Gross Acres (33 Net AC)  
21155 - 21211 - 21353 W. Grass Lake Road  
Unincorporated Northern Lake County, Illinois**

- Location:** South Side of West Grass Lake Rd. East of North Savage Rd. and West of North Deep Lake Rd.
- Access:** Grass Lake Road
- Frontage:** Approximately 2700' frontage on Grass Lake Road
- Zoning:** AG ( Agricultural) and OS (Open Space) in Lake County, IL
- Available For:** Residential, Recreational, Equestrian
- Divisible:** No
- Utilities:** South and East Boundaries of Property. Sewer may require a lift station.
- Sale Price:** \$1,452,000 (\$44,000 Per Net Acre)
- Remarks:** Prime "In-fill" site for single family or multi family subdivision, recreational, estate home and/or equestrian facility. Picturesque pond views and rolling topography. Approximately 33 acres net of wetlands and ponds. Subject property can remain in Lake County or be zoned and annexed to Lindenhurst, IL

Above information is subject to verification and no liability for errors or omissions is assumed. Prices subject to change and listing may be withdrawn without notice.

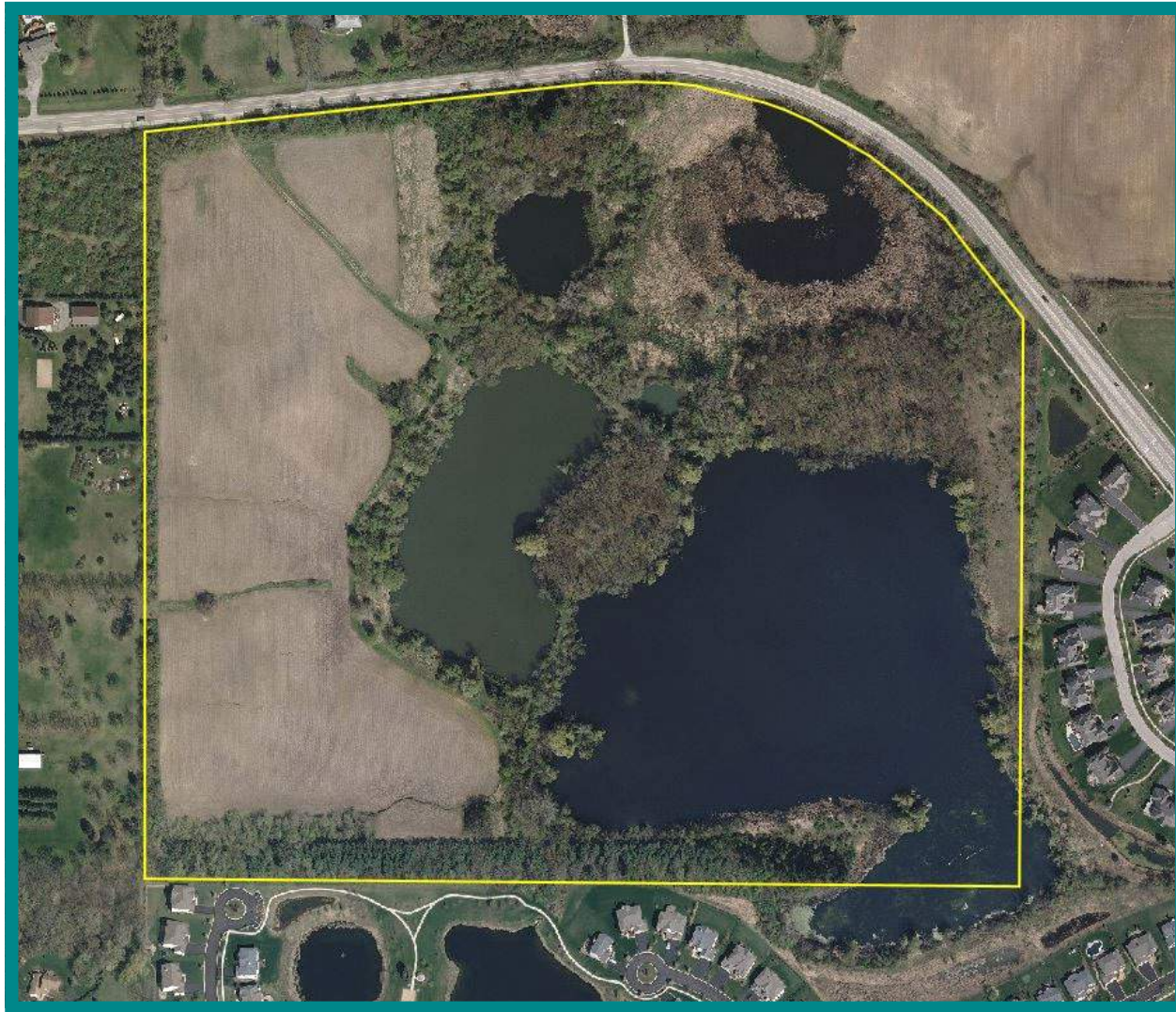


**CONTACT: Robert Elbrecht**  
**847.360.1375 sales@tristaterealty.com**  
Tri-State Realty, Inc. • P.O. Box 7860 Gurnee, Illinois 60031  
Commercial and Industrial Real Estate • Licensed in Illinois and Wisconsin

[www.tristaterealty.com](http://www.tristaterealty.com)

Copyright © Tri-State Realty, Inc. All world rights reserved

**APPROX 79 GROSS ACRES (APPROX 33 NET ACRES)  
21155-21211-21353 W. GRASS LAKE RD, UNINCORPORATED LAKE COUNTY, IL**



Above information is subject to verification and no liability for errors or omissions is assumed. Prices subject to change and listing may be withdrawn without notice.



[www.tristaterealty.com](http://www.tristaterealty.com)

**CONTACT: Robert Elbrecht**  
**847.360.1375 [sales@tristaterealty.com](mailto:sales@tristaterealty.com)**

Tri-State Realty, Inc. • P.O. Box 7860 Gurnee, Illinois 60031  
Commercial and Industrial Real Estate • Licensed in Illinois and Wisconsin